

KEY:

D.O.H. = DOOR OPENING HEIGHT

G.H. = GLASS HEIGHT



1520 Jabez Run
Suite 303
Millersville, MD 21108
800.451.0649

REV.	DATE
1	01/04/10
2	07/15/16

TOLERANCES

UNLESS OTHERWISE SPECIFIED:

DECIMAL .XXX = ± .005

.XX = ± .01

FRACTION ± 1/16

DEGREE ± 3°

DORMA EASI-FRONT'S FIXED PANEL SET
TWO SIDED SUPPORT GLAZING SYSTEM - MC05-6S-16S-01

PROPRIETARY AND CONFIDENTIAL

This document and information is the proprietary property of DORMA GLAS. Any party, by accepting this document and information, assumes custody and control hereof and agrees that such is given in confidence and this document and the information set forth therein will not be copied, used or reproduced in whole or in part, nor its contents revealed to any person in any manner that would cause the loss or impairment of the owner's legal rights including, but not limited to, the owner's common law copyrights thereto.

DRAWN BY: MW

DATE: 03.09.09

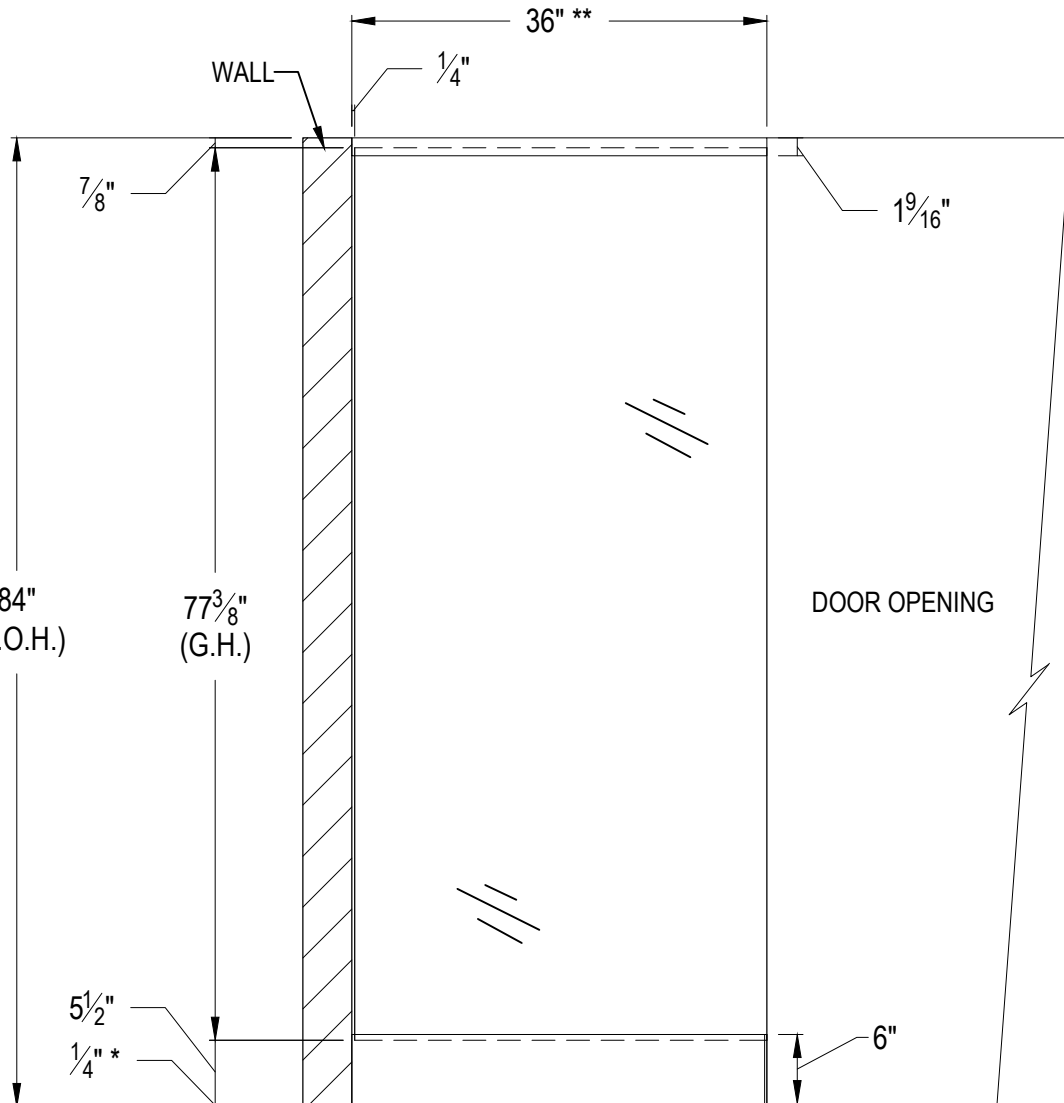
SCALE: $\frac{3}{4}" = 1'-0"$

SHEET: 1 OF 2

DRAWING NO.

MC05-6S-16S-01

DO NOT SCALE DRAWING

**ART. NO. MC.5.965****TWO SIDED SUPPORT GLAZING SYSTEM FOR $\frac{3}{4}"$ GLASS INCLUDES...**

#807.045 BASE PROFILE STANDARD TYPE [SPECIFY LENGTH]

#807.085 CLAMPING PART STANDARD TYPE - QTY. 4

#807.003 PROFILE COVER [SPECIFY LENGTH x 2]

#225.225 6" SILL DRI-FIT™ SIDELITE RAIL [SPECIFY LENGTH AND SADDLE]

#925.028 6" END CAP - QTY. 1

#925.076 DRI-FIT™ GASKET

NOTE: GLASS NOT SUPPLIED BY DORMA.* OPENING CLEARANCES MAY VARY BASED ON SITE CONDITIONS. STANDARD CLEARANCES OF $\frac{1}{8}"$ USED UNLESS OTHERWISE INDICATED.

** LINEAR PRODUCTS SOLD IN ONE FOOT INCREMENTS. THREE FOOT LENGTH IS SHOWN.

KEY:

D.O.H. = DOOR OPENING HEIGHT

G.H. = GLASS HEIGHT



1520 Jabez Run
Suite 303
Millersville, MD 21108
800.451.0649

REV.	DATE
①	01/04/10
②	07/15/16

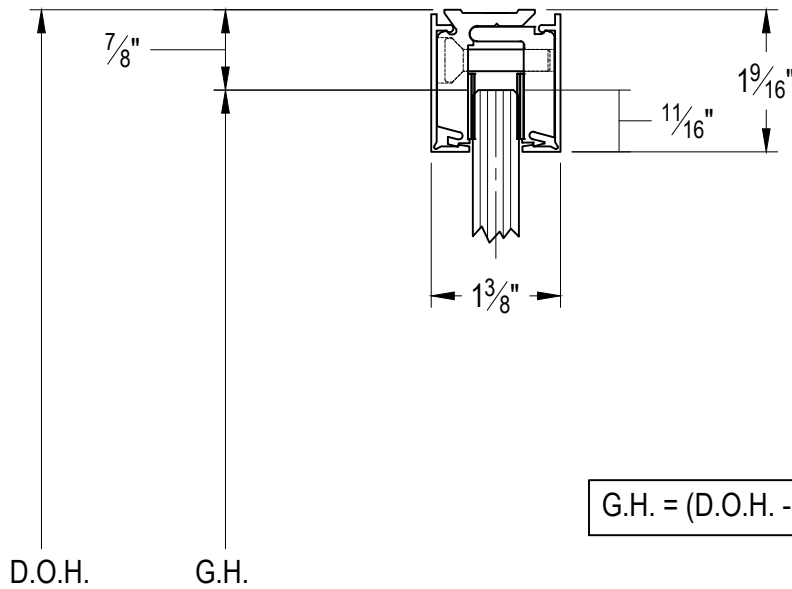
TOLERANCES
UNLESS OTHERWISE
SPECIFIED:

DECIMAL .XXX = ± .005

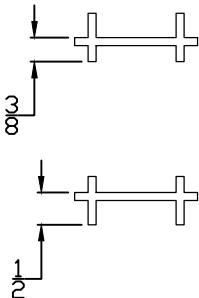
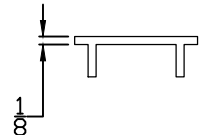
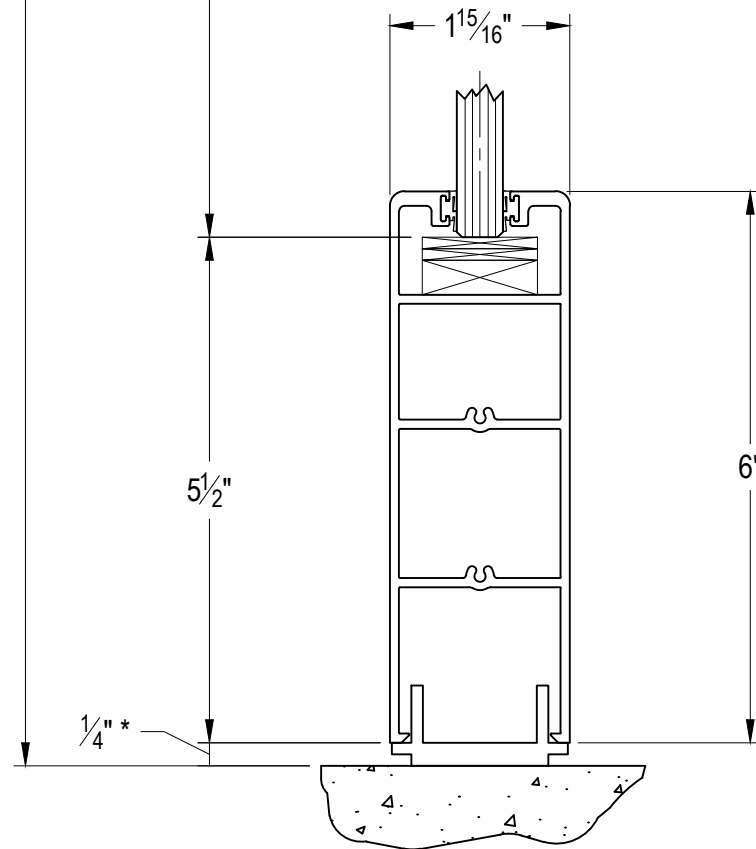
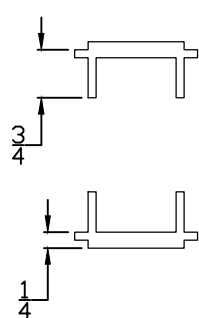
.XX = ± .01

FRACTION ± 1/16

DEGREE ± 3°



$$G.H. = (D.O.H. - 6\frac{5}{8}'')^*$$

SADDLE TYPES
(NOT DRAWN
TO SCALE)**#925.051****#925.050****#925.049**
DORMA EASI-FRONTS FIXED PANEL SET
TWO SIDED SUPPORT GLAZING SYSTEM - MC05-6S-16S-01

PROPRIETARY AND CONFIDENTIAL
This document and information is the proprietary property of DORMA GLAS. Any party, by accepting this document and information, assumes custody and control hereof and agrees that such is given in confidence and this document and the information set forth therein will not be copied, used or reproduced in whole or in part, nor its contents revealed to any person in any manner that would cause the loss or impairment of the owner's legal rights including, but not limited to, the owner's common law copyrights thereto.

DRAWN BY: MW

DATE: 03.09.09

SCALE: 1:2

SHEET: 2 OF 2

 DRAWING NO.
 MC05-6S-16S-01

DO NOT SCALE DRAWING

* OPENING CLEARANCES MAY VARY BASED ON SITE CONDITIONS. STANDARD CLEARANCES SHOWN ARE USED IN FORMULA.